

# FA-H20

## FLOOR DOOR H20 loading

### Application

- Designed for interior and exterior applications where watertightness is not required

### Product Features

- Angle frame construction with integral anchor flange is designed to be cast into concrete
- Diamond plate door panel is equipped with a flush aluminum drop handle and an automatic hold open arm, along with stainless steel compression spring & stainless steel slamlock
- Designed for off-street locations that may occasionally receive AASHTO H-20-44 wheel loads



Double Leaf

### FA-H20 Floor Door Specifications:

**Material:** Aluminum door and frame; stainless steel hinges and hardware

**Door:** 1/4" aluminum diamond plate reinforced to meet AASHTO specification

H20-44 for traffic loading (16000 lb. wheel load with 30% added for impact)

**Hinge:** Stainless steel butt hinges with tamperproof stainless steel bolts and nuts

**Frame:** Angle frame fabricated from aluminum extrusion with an integral 1" anchor flange

**Opening Device:** Automatic hold open arm with red vinyl grip allows door panel

to open to 90 degrees, locking door in open position, and allowing for easy control

when closing door panel. Stainless steel compression springs provide lift assistance.

**Standard Latch:** Flush aluminum drop handle, stainless steel slamlock with a fixed inside handle, removable outside handle, and removable threaded plug

**Finish:** Mill finish, with bituminous coating applied to exterior of frame

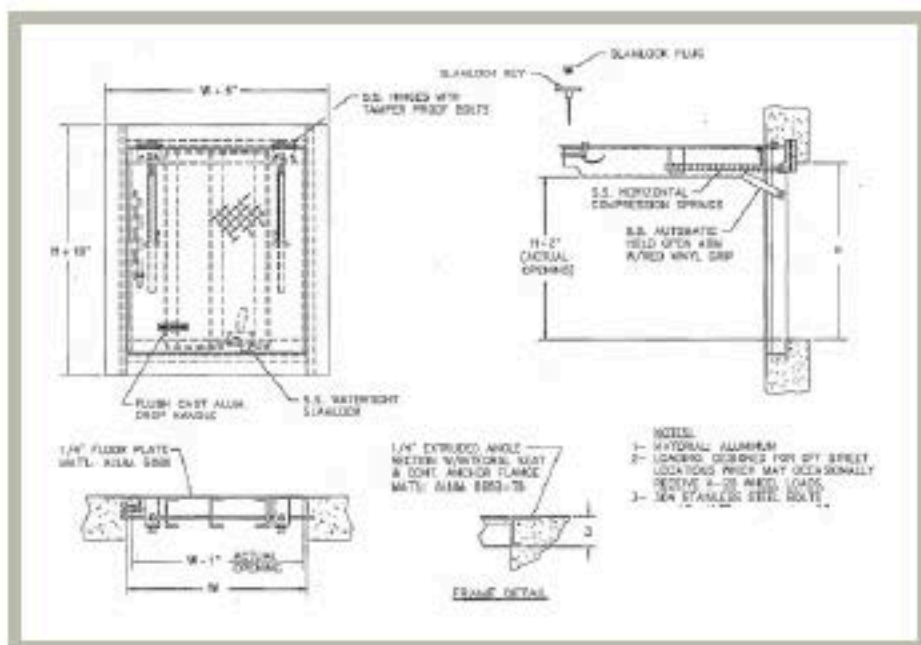
### FA-H20 STANDARD SIZES

(other sizes available upon request)

| Nominal Door Size W&H |             | Weight per Door |       |
|-----------------------|-------------|-----------------|-------|
| inches                | mm          | lbs.            | kg.   |
| 24 x 24               | 610 x 610   | 55              | 25    |
| 24 x 30               | 610 x 762   | 65              | 29.5  |
| 24 x 36               | 610 x 914   | 75              | 34    |
| 30 x 30               | 762 x 762   | 80              | 36.4  |
| 30 x 48               | 762 x 1220  | 125             | 56.8  |
| 36 x 36               | 914 x 914   | 110             | 49.9  |
| 36 x 48               | 914 x 1220  | 150             | 68.1  |
| 42 x 42               | 1067 x 1067 | 170             | 77.2  |
| 48 x 48*              | 1220 x 1220 | 200             | 90.8  |
| 48 x 72*              | 1220 x 1829 | 295             | 133.9 |
| 60 x 60*              | 1524 x 1524 | 330             | 149.8 |

\*Double Leaf

For detailed specifications see submittal sheet



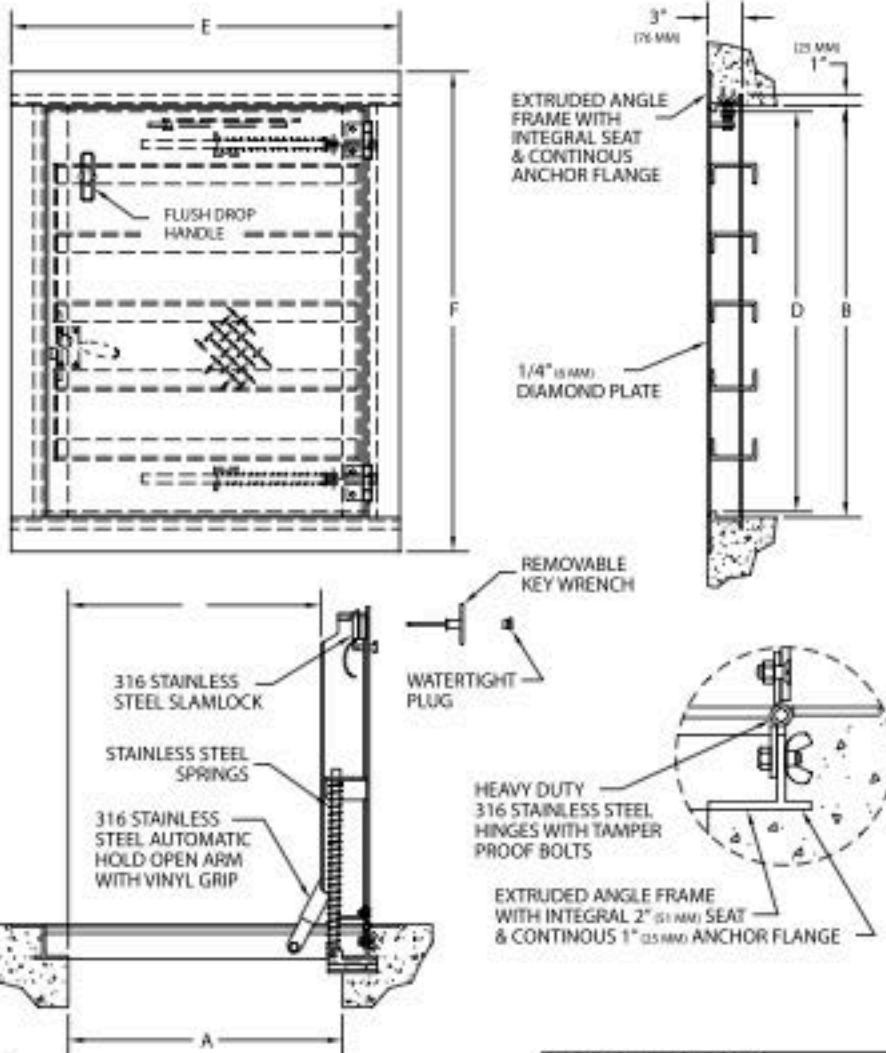


www.acudor.com  
 U.S.A.: info@acudor.com / 800.722.0501  
 CANADA: info@acudor.ca / 844.228.3671  
 INTERNATIONAL: info@acudorintl.com  
 905.428.2240

# FA-H20

## ANGLE FRAME FLOOR DOOR H20 LOADING - SINGLE LEAF

| NOMINAL DOOR SIZE     | FRAME OPENING |            | CLEAR OPENING |            | OVERALL SIZE |            | WEIGHT   |
|-----------------------|---------------|------------|---------------|------------|--------------|------------|----------|
|                       | A in. (mm)    | B in. (mm) | C in. (mm)    | D in. (mm) | E in. (mm)   | F in. (mm) |          |
| 24 x 24 (610 x 610)   | 24 (610)      | 24 (610)   | 22 (559)      | 23 (584)   | 34 (864)     | 30 (762)   | 62 (28)  |
| 24 x 30 (610 x 914)   | 24 (610)      | 30 (762)   | 22 (559)      | 28 (711)   | 34 (864)     | 36 (914)   | 65 (30)  |
| 24 x 36 (610 x 914)   | 24 (610)      | 36 (914)   | 22 (559)      | 35 (889)   | 34 (864)     | 42 (1067)  | 87 (39)  |
| 30 x 30 (762 x 762)   | 30 (762)      | 30 (762)   | 28 (711)      | 29 (737)   | 40 (1016)    | 36 (914)   | 86 (39)  |
| 30 x 48 (762 x 1219)  | 30 (762)      | 48 (1219)  | 28 (711)      | 47 (1194)  | 40 (1016)    | 54 (1372)  | 133 (60) |
| 36 x 36 (914 x 914)   | 36 (914)      | 36 (914)   | 33 (838)      | 35 (889)   | 46 (1168)    | 42 (1067)  | 122 (55) |
| 36 x 48 (914 x 1219)  | 36 (914)      | 48 (1219)  | 33 (838)      | 45 (1143)  | 46 (1168)    | 43 (1092)  | 150 (68) |
| 42 x 42 (1067 x 1067) | 42 (1067)     | 42 (1067)  | 39 (990)      | 39 (990)   | 52 (1320)    | 52 (1320)  | 170 (77) |



**NOTE:**  
 - MATERIAL: ALUMINUM WITH STAINLESS STEEL SPRINGS, 316 STAINLESS STEEL NUTS & BOLTS, HINGES, AND HOLD OPEN ARM.  
 - LOADING: DESIGNED FOR OFF-STREET LOCATIONS WHICH MAY OCCASIONALLY RECEIVE H-20 WHEEL LOADS.  
 - BITUMINOUS COATING IS APPLIED TO AREA OF FRAME IN CONTACT WITH CONCRETE

| OPTIONAL FEATURES        |                             |
|--------------------------|-----------------------------|
| <input type="checkbox"/> | RECESSED STAPLE FOR PADLOCK |
| <input type="checkbox"/> | OTHERS: _____               |

JOB NAME:  
 CUSTOMER:

APPROVED BY:  
 DATE: